

SUMMER 2019 EVENTS AT THE YELLOWSTONE GATEWAY MUSEUM

SAT., JUNE 1: Ray Alt Living History Day, 10am-5pm

Demos include flint knapping, blacksmithing, fire starting (10-2), Dutch-oven cooking, painting & sketching station (2-5), willow sculpture. Learn Native American games. Burger & hot dog plates available. Great raffle baskets benefit the museum. Preview new exhibits: Cultural Landscapes (see below); Agriculture; and Ice-age Mammoth. Free family event!



Ray Alt

THURS., JUNE 6: Vignettes of History: Cultural Landscapes of Park Co. gala opening, 5:30pm-7:30pm

Local artists depict well-known (and obscure) cultural sites but their locations are not identified in this exhibit. To test people's cultural landscape knowledge, we are holding a contest (with prizes) at the exhibit opening. Afterward, a worksheet with possible locations will be available. Located upstairs in the Expedition Room through September 2019. Most pieces are available for purchase, benefiting the museum. Sponsors are: CTA Architects and Engineers, and the Friends of YGM.



Les Herman, gouache

Above free events are held at Yellowstone Gateway Museum. See reverse for info about this summer's Art Walk exhibits at Park Photo.

JULY 8-AUGUST 10: Give A Hoot: 1st Annual Community Giving Challenge

The Yellowstone Gateway Museum is thrilled to be participating in this fundraising program hosted by the Park County Community Foundation (PCCF)!



Kim Fink and students

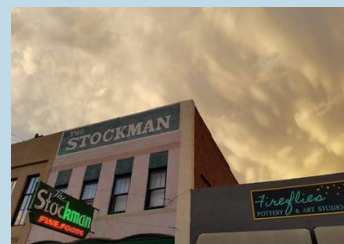
Donors can make gifts online or by check to PCCF accompanied by a Give a Hoot donation form. We will receive 100% of the gifts designated to the museum through the Give a Hoot campaign AND those gifts will be partially matched by PCCF, maximizing your impact! Please visit www.give-a-hoot.org to contribute or give us a call.

TUES., AUGUST 20: Beer for a Cause, Katabatic Brewing Co., 117 W. Park St., Livingston, 4pm-8pm

Snacks, raffles, give-aways. \$1 for each beer sold goes to YGM – a fun reason to have a cold beer!

Dates/Times TBA: Walking Tours in Livingston!

Bars and Brothels, West Side Residential District, and Early Livingston tours are being developed by staff and volunteers. Do you know of someone who might be interested in joining our team of tour guides? Give us a call.



Learn local bar history!



**OPEN 7 DAYS/WEEK, 10am-5pm,
MEMORIAL DAY through SEPTEMBER**

118 W. Chinook St., Livingston. 222-4184.
www.yellowstonegatewaymuseum.org or find us on
Facebook, Instagram, Twitter.



www.yellowstonegatewaymuseum.org

FRIENDS OF THE
YELLOWSTONE
GATEWAY MUSEUM

P.O. Box 815
118 W. CHINOOK ST.
LIVINGSTON, MT 59047

NON-PROFIT
US POSTAGE
PAID
LIVINGSTON, MT
PERMIT NO. 96

Current Resident Or:



Prints! Did you know that you can order Yellowstone Gateway Museum collection prints from Park Photo? This image, and many others, including our online collection at <https://yellowstone.pastperfectonline.com>, are available. Proceeds from sales support the ongoing preservation of history at the museum.

~ ~ ~

Art Walks! Visit Park Photo during these community events held every fourth Friday from June through September. Changing exhibits feature images of trout, trains, the rodeo, and more.

**Park
PHOTO**

Northern Pacific Railway workers, Livingston Shops, ca. 1912.
(We know many of these men's names.)

115 S. Main Street, Livingston, MT
406-223-5546 ~ info@parkphoto.com