



FLESHMAN CREEK URBAN RESTORATION PROJECT



TRAFFIC PATTERN, FLOW & PARKING ADVISORY

QUESTIONS:

Contact Kristen Galbraith

Project Public Relations

406-222-6555

or

kristen@nittanygrantworks.com

For more information regarding the Fleshman Creek project or any other

County projects visit

“Current Projects”

at

www.parkcounty.org

or send questions to

projects@parkcounty.org

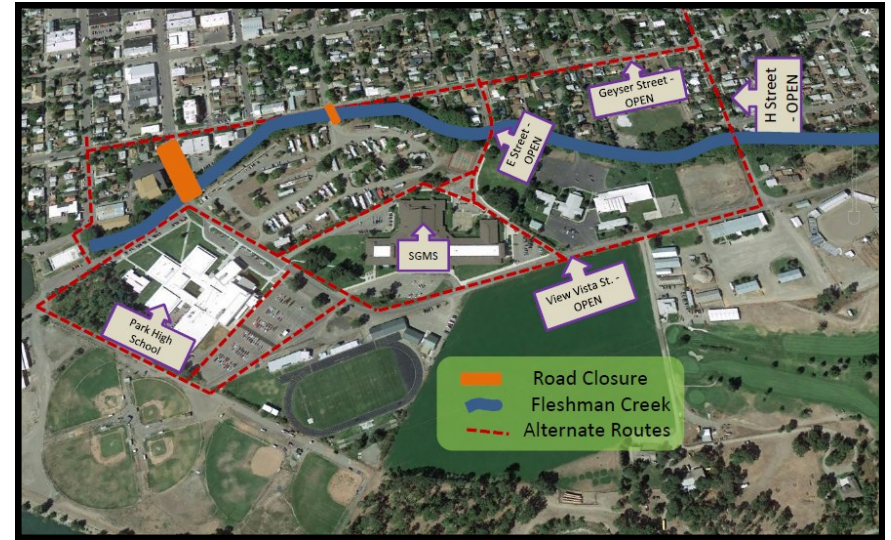
Fleshman Creek construction activities are now over halfway complete. Infrastructure replacements are critical to provide for the stream restoration activities and address existing utility deficiencies within and immediately adjacent to the project area which encompasses the streets around and leading to East Side School, Sleeping Giant Middle School, St. Mary’s Catholic School and Park High School.

Specific dates for alterations to traffic patterns, flow and parking along View Vista, E Street and Main Street *are constantly changing due to weather constraints and materials deliveries.* We are reminding area residents, students, parents, faculty and administration that there will be traffic delays, re-routes and need for alternate drop-off and pick-up areas for students over the course of the project period, estimated to be complete in July 2014.

During the month of JANUARY, please use alternate routes as directed by construction signage and the attached map.

TRAFFIC ACCESS TO SCHOOLS VIA MAIN STREET IS CLOSED BETWEEN GEYSER AND VIEW VISTA/RIVER DRIVES. PLEASE USE ANY OF THE OTHER FOUR ROUTES TO ACCESS THE SCHOOLS.

Expect periods of up to ten minutes of traffic movement delays as well as street closures and detours. Please leave early to alleviate drop-off and pick-up problems. Weekly advertisements published in Monday’s Livingston Enterprise and posted to the Park County website will indicate anticipated dates of closures and traffic rerouting. We are happy to add you to our email list in order to disseminate weekly and “as-needed” updates.



PROJECT BENEFITS

Many important discussions evolve during major community infrastructure projects. While some residents favor necessary progress and improvements, many have the tendency to focus on the negative consequences of short-term inconveniences. It is important to remember that the entire \$3.05 million Fleshman Creek Restoration project is funded through grants from four federal and state agencies, with Park County providing a little over \$300,000 toward total project costs.

These funds are being used for infrastructure replacements that are critical to address existing utility deficiencies within, and immediately adjacent to the project area and to provide for necessary stream restoration activities. Infrastructure work includes water and sewer main replacements and the installation of a new sanitary lift station at G-Street Park. Replacement of undersized hydraulic structures and restoration of the channel corridor will convey floodwaters to reduce the risk of flooding. Undersized and inefficient culverts will be replaced with hydraulic structures designed for high water events and water movement while reducing stream velocity. Fish movement will additionally be aided by the prevention of debris jams at pipe inlets. Newly contoured streambanks will be replanted with native woody and herbaceous vegetation aiding in bank stabilization, riparian protection, flood energy dissipation, pollutant filtration and improved water quality. During construction, all active project areas will have fencing erected for increased safety precautions.

The cost of six new culverts (not including installation) to replace antiquated and inefficient structures unable to convey flood waters far exceeds the County’s total investment in the project, by over \$600,000. In addition, the City of Livingston now has a new lift station and new wastewater and water infrastructure that would have cost over \$800,000 - all funded by grants received by the County. The project grant funds essentially eliminate \$2.8 million in capital improvement dollars that would have to come from County and City budgets at some point in the future. Community infrastructure does not last forever and we are fortunate to have it replaced at a fraction of what it would cost. We are encouraged that Park County, the City of Livingston, Livingston School Districts 1 & 4, residents, students, school staff and administration and business, building and property owners will all receive multiple benefits from these project activities.

Weekly Fleshman Creek project update meetings are held every Thursday at 2 p.m. at the Pickle Barrel. We encourage anyone with questions or comments to please attend.

We appreciate your patience and support of this important community project.



LIVINGSTON SCHOOL DISTRICT 4 & 1

